



Compact Rearview Color Camera

MXN27C(H)

User's Manual



MXN27C(H) Professional Series

Compact Rearview Color Camera

FEATURES

- High-Resolution 1/3" Color CMOS Camera
- Compact Camera
- Mirror Image (Normal Image selectable)
- Waterproof Housing (IP-68)
- Low-illumination
- Low Power Consumption
- Diagonal 145° Viewing
- Small connector type in order to avoid drilling of big holes
- Operating temperature -40℃ ~ +80℃
- Anti-corrosive coating
- CE Marked
- EMC approved

SPECIFICATION

Image sensor	1/3" Color CMOS Image Sensor
Effective Pixels	410K
Horizontal Resolution	560 TV Lines
Current Consumption	at DC 12V, 40mA (Max)
Operating Voltage	DC12V (5V~ 24V)
Lens	145°(D), 114°(H), 84°(V) F= 1.5
Video Output	1.0V p-p composite, 75 ohm
Shutter Control	1/50 ~ 1/100,000 sec.
S/N Ratio	More Than 48dB
Operating Temp	-40℃ ~ +80℃
Min. illumination	0.1 Lux
Cable Length	Camera 1m, Extension 5m
Measurement (Camera)	39mm(D) x 26.5(L) x 20mm, Gate Hole Ø 6mm
Material	Aluminium
Material Color	Black
Weight	Approx. 95g

COMPOSITION

Rearview Camera 1pc



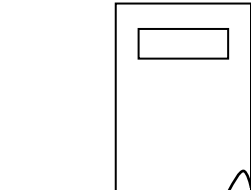
Extension Cable 1pc



3M Tape, Screw

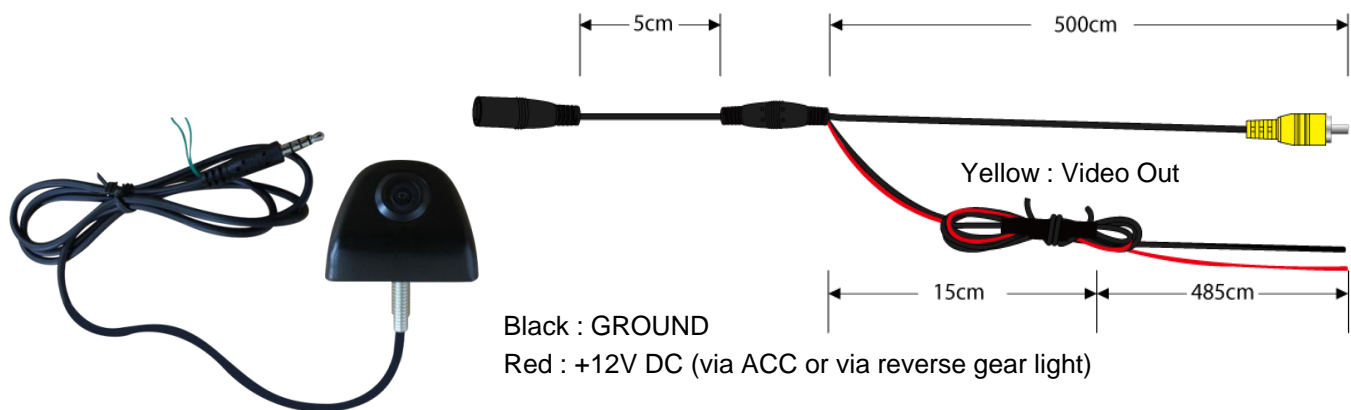


Manual 1pc



Compact Rearview Color Camera

CONNECTION

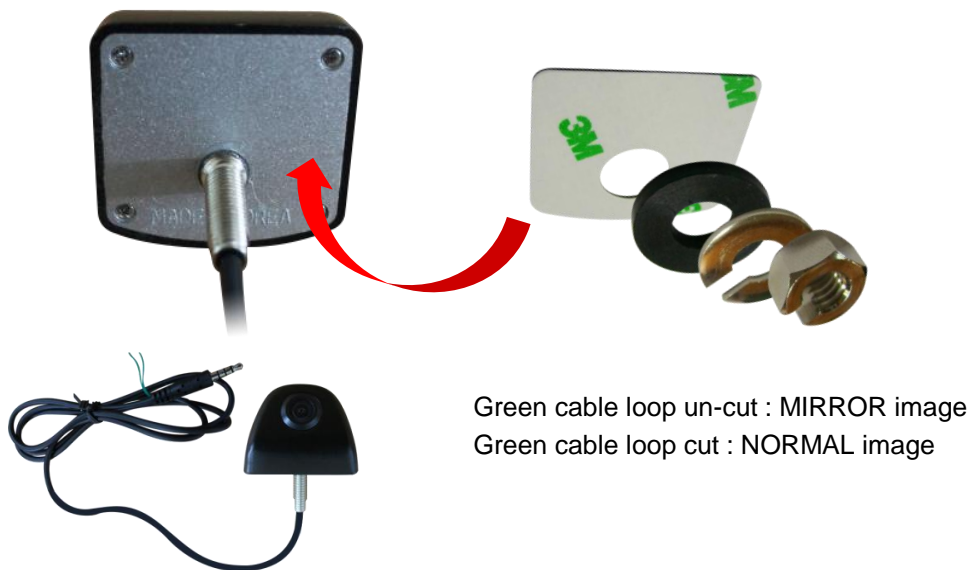


INSTALLATION

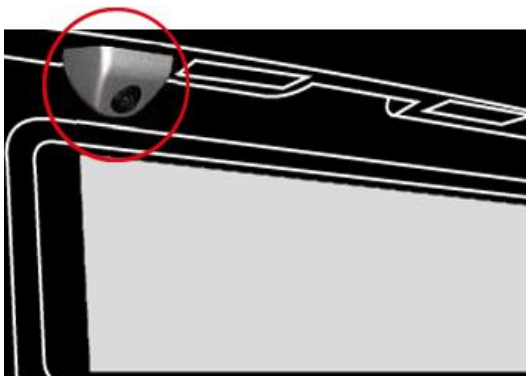
Wipe away all oil and dirt etc. from the mounting surface.

Make connections and placement tentatively in advance, to decide positions.

- ① The diameter of drilling hole should be \varnothing 6mm.
- ② Attach the two side tape on the camera body and place the camera in position.
- ③ Add the rubber washer, spring washer on the camera body and fix the nut.



Suitable for horizontal installation only as below:





Compact Rearview Color Camera

MXN27C(V)

User's Manual



MXN27C(V) Professional Series

Compact Rearview Color Camera

FEATURES

- High-Resolution 1/3" Color CMOS Camera
- Compact Camera
- Mirror Image (Normal Image selectable)
- Waterproof Housing (IP-68)
- Low-illumination
- Low Power Consumption
- Diagonal 145° Viewing
- Small connector type in order to avoid drilling of big holes
- Operating temperature -40℃ ~ +80℃
- Anti-corrosive coating
- CE Marked
- EMC approved

SPECIFICATION

Image sensor	1/3" Color CMOS Image Sensor
Effective Pixels	410K
Horizontal Resolution	560 TV Lines
Current Consumption	at DC 12V, 40mA (Max)
Operating Voltage	DC12V (5V~ 24V)
Lens	145°(D), 114°(H), 84°(V) F= 1.5
Video Output	1.0V p-p composite, 75 ohm
Shutter Control	1/50 ~ 1/100,000 sec.
S/N Ratio	More Than 48dB
Operating Temp	-40℃ ~ +80℃
Min. illumination	0.1 Lux
Cable Length	Camera 1m, Extension 5m
Measurement (Camera)	39mm(D) x 26.5(L) x 20mm, Gate Hole Ø 6mm
Material	Aluminium
Material Color	Black
Weight	Approx. 95g

COMPOSITION

Rearview Camera 1pc



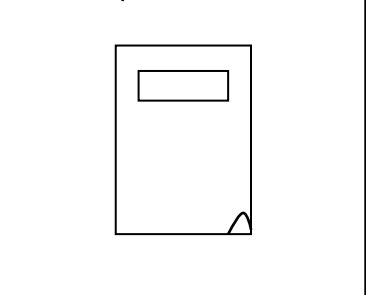
Extension Cable 1pc



3M Tape, Screw

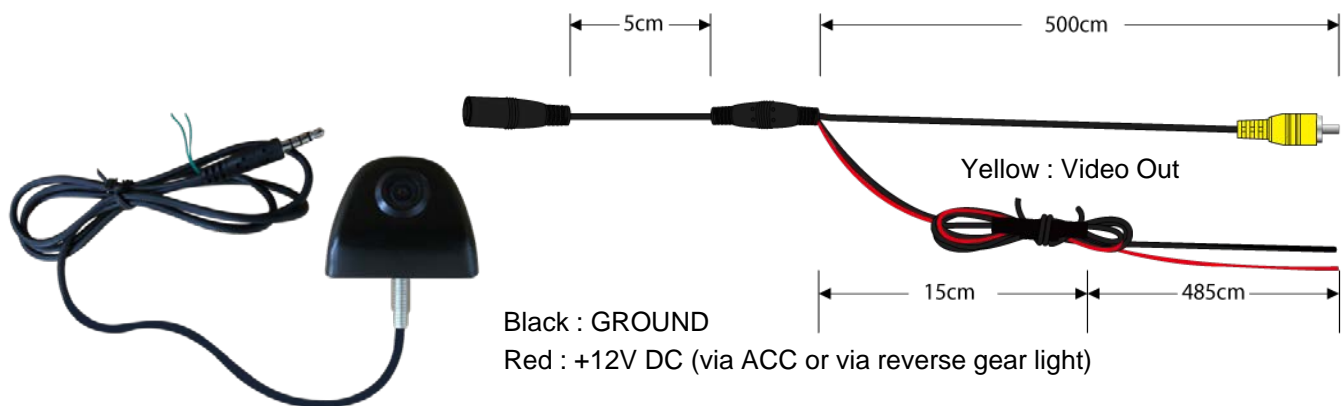


Manual 1pc



Compact Rearview Color Camera

CONNECTION

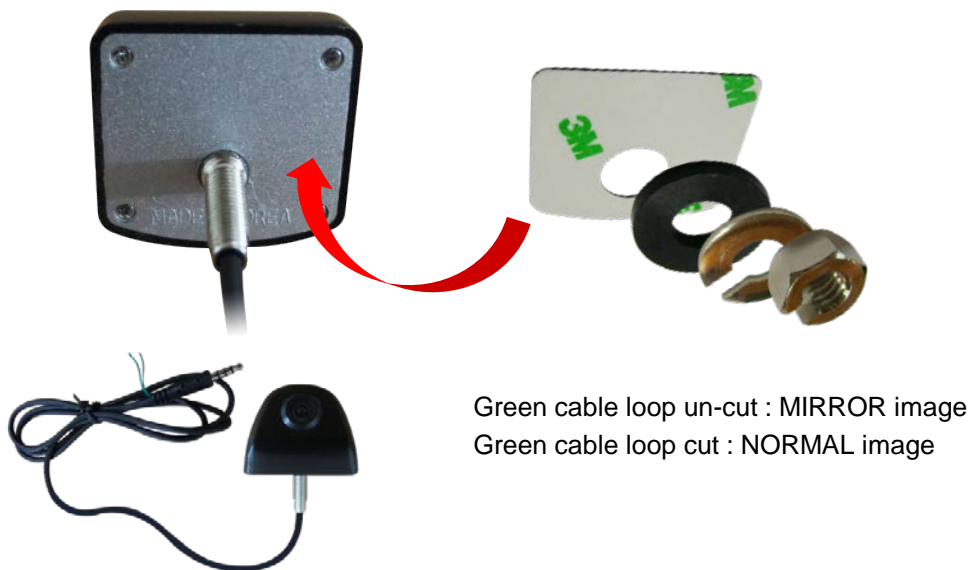


INSTALLATION

Wipe away all oil and dirt etc. from the mounting surface.

Make connections and placement tentatively in advance, to decide positions.

- ① The diameter of drilling hole should be \varnothing 6mm.
- ② Attach the two side tape on the camera body and place the camera in position.
- ③ Add the rubber washer, spring washer on the camera body and fix the nut.



Suitable for vertical installation only as below:

